

Aniela SKRZYPCZYK

PhD student / ESR 10

PhD on

Virtual 2D/3D image analysis and mathematical modeling
during expansion of iPS cells and hepatic differentiation in
bioartificial liver modular device

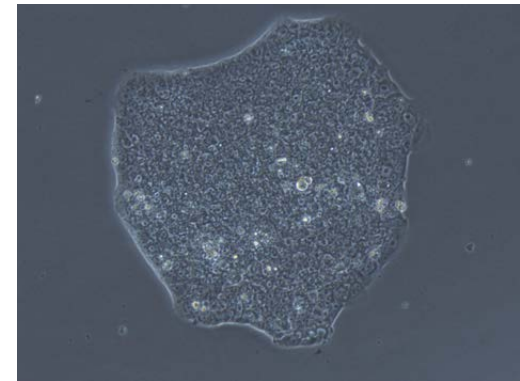
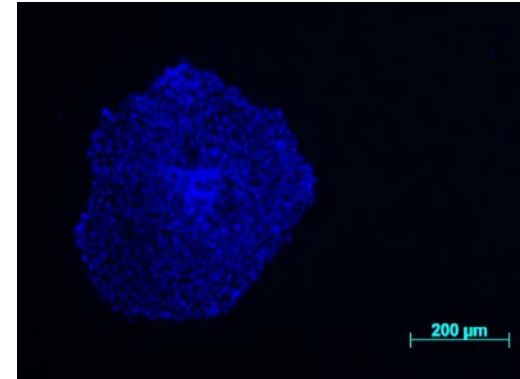
October 2014

PhD start date: August 2014

Cell Techniques and Applied Stem Cell Biology
Biomedical and Biotechnological Centre
University Leipzig, Germany
Supervisors: Prof. A. BADER, Prof. U-D. BRAUMANN, Dr. S. GIRI

Current activities

- Examination of iPS cells during expansion
- Immunocytochemical staining
- Preparation of cells for electron microscopy and confocal microscopy
- FACS analysis



Future plans

- iPS cell characterization during expansion and differentiation using different image analysis softwares
- Analysis of cells interactions and colony formation
- Cell reprogramming with episomal vectors
- Immunolabeling for electron microscopy

